

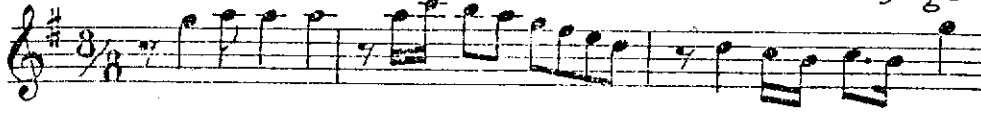
TAHİR

İLÂHÎ

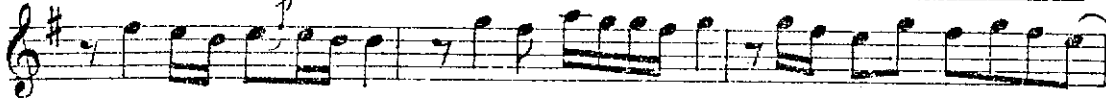
Güftesi : kimin olduğu meçhuldür.
Bestesi : müezzîn Halit Beyindir

Düyek (♩=120)

Lu — t fet ba — na — e — y gaf



fa — r be — ni af ve —



— y le — a l la hı — m be ni a —



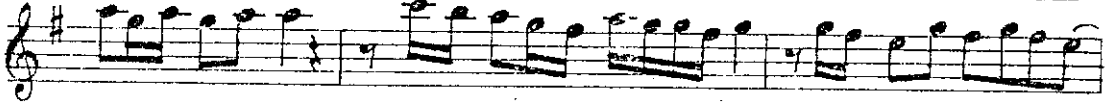
— f ve — y le — a l la hı — m



Dü ci ha — n i — ç re — pe — na —



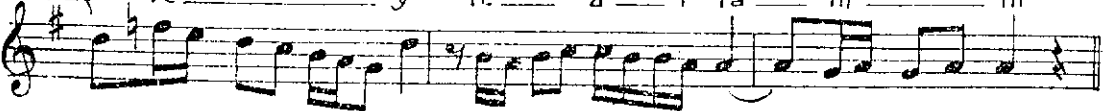
— hı — m be — ni af ve —



— y le — a l la hı — m be ni a —



f ve — y le — a l la hı — m (SON)



Lutfet bana ey gaffar beni afveyle allahım
Dücihan içre penahım beni afveyle allahım